

FND. LITER POST  
1/4 CORNER  
SECTION 7-38-40  
CERTIFIED CORNER RECORD  
N 1039179.4810  
E 859164.8750

UNPLATTED  
NOT A PART OF THIS PLAT  
1024.72'

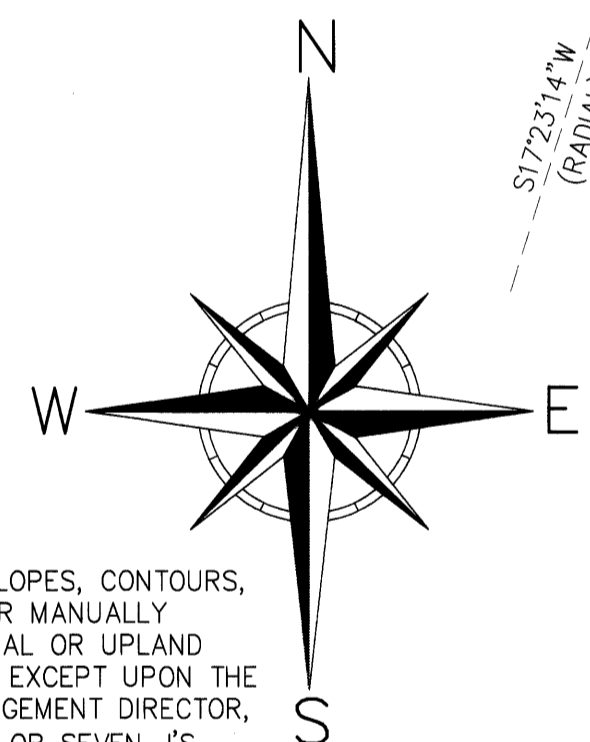
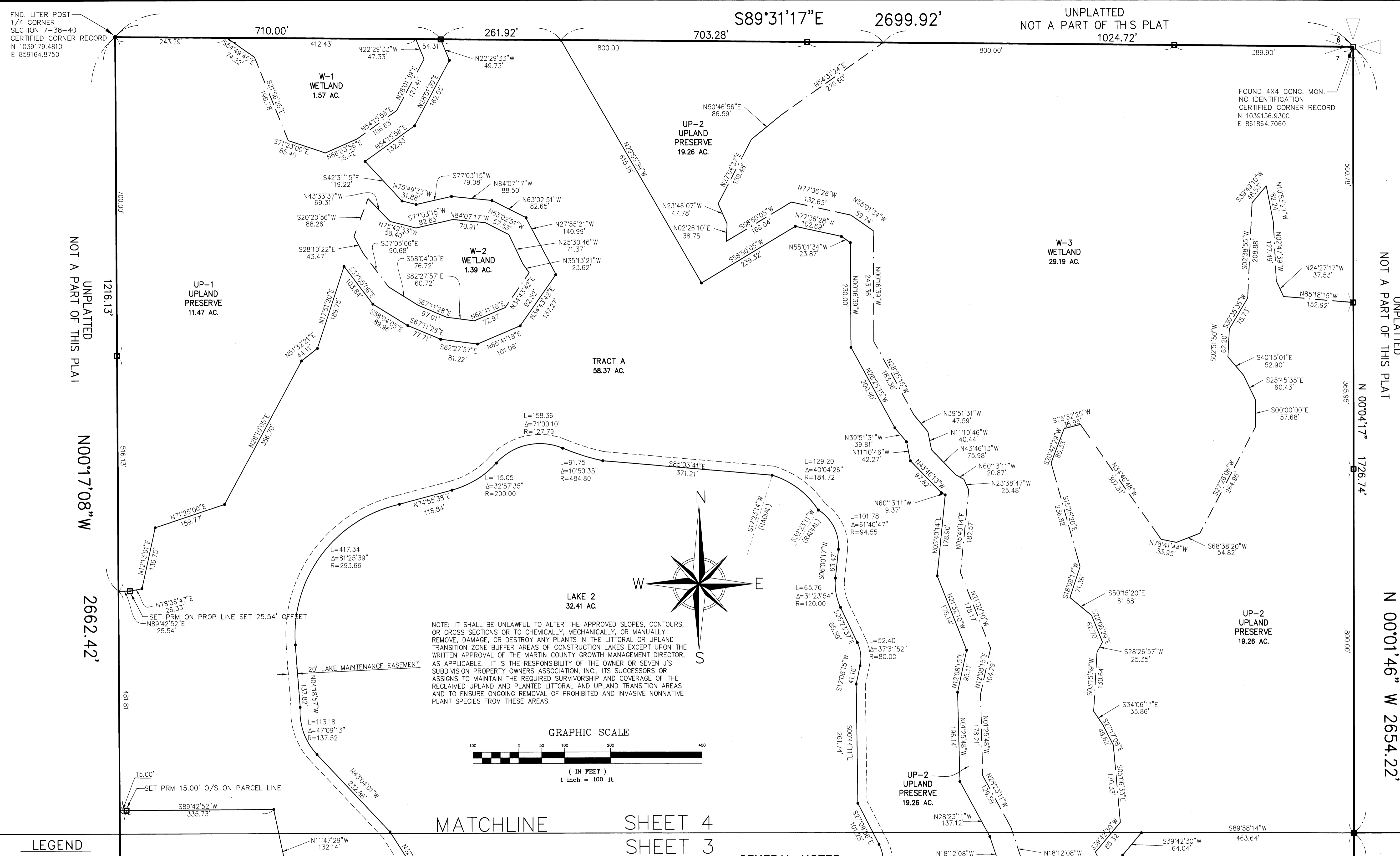
FOUND 4X4 CONC. MON.  
NO IDENTIFICATION  
CERTIFIED CORNER RECORD  
N 1039156.9300  
E 861864.7060

UNPLATTED  
NOT A PART OF THIS PLAT

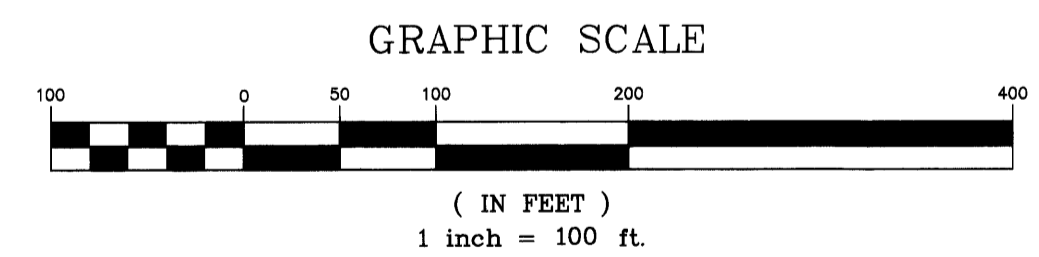
UNPLATTED  
NOT A PART OF THIS PLAT

UNPLATTED  
NOT A PART OF THIS PLAT

UNPLATTED  
NOT A PART OF THIS PLAT



NOTE: IT SHALL BE UNLAWFUL TO ALTER THE APPROVED SLOPES, CONTOURS, OR CROSS SECTIONS OR TO CHEMICALLY, MECHANICALLY, OR MANUALLY REMOVE, DAMAGE, OR DESTROY ANY PLANTS IN THE LITTORAL OR UPLAND TRANSITION ZONE BUFFER AREAS OF CONSTRUCTION LAKES EXCEPT UPON THE WRITTEN APPROVAL OF THE MARTIN COUNTY GROWTH MANAGEMENT DIRECTOR, AS APPLICABLE. IT IS THE RESPONSIBILITY OF THE OWNER OR SEVEN J'S SUBDIVISION PROPERTY OWNERS ASSOCIATION, INC., ITS SUCCESSORS OR ASSIGNS TO MAINTAIN THE REQUIRED LITTORAL AND UPLAND TRANSITION AREAS AND TO ENSURE ONGOING REMOVAL OF PROHIBITED AND INVASIVE NONNATIVE PLANT SPECIES FROM THESE AREAS.



- LEGEND**
- INDICATES SET NO. 5 IRON ROD AND CAP "BL LB 6852"
  - INDICATES NAIL AND DISK (PCP)
  - INDICATES SET 4X4 CONCRETE MONUMENT WITH ALUMINUM DISC "BETSY LINDSAY, INC. PRM LB 6852" (PRM) UNLESS OTHERWISE NOTED.
  - AC. INDICATES ACRES
  - BL INDICATES BETSY LINDSAY, INC.
  - CB INDICATES CHORD BEARING
  - CL INDICATES CHORD LENGTH
  - CONC. INDICATES CONCRETE
  - D.B. INDICATES DEED BOOK
  - Δ INDICATES CENTRAL ANGLE
  - FND. INDICATES FOUND
  - L INDICATES ARC LENGTH
  - LB INDICATES LICENSED BUSINESS
  - MON. INDICATES MONUMENT
  - NO. INDICATES NUMBER
  - O.R.B. INDICATES OFFICIAL RECORD BOOK
  - PG. INDICATES PAGE
  - PRM INDICATES PERMANENT REFERENCE MONUMENT
  - NAD INDICATES NORTH AMERICAN DATUM
  - R INDICATES RADIUS LENGTH

# SEVEN J'S SUBDIVISION

BEING A PORTION OF SECTION 7, TOWNSHIP 38 SOUTH, RANGE 40 EAST  
MARTIN COUNTY, FLORIDA.

**GENERAL NOTES**

- A. BEARINGS AS SHOWN HEREON ARE BASED ON STATE PLANE COORDINATES, NAD 83/90, FLORIDA EAST ZONE, REFERENCE A BEARING OF S89°50'13"E ALONG THE SOUTH LINE OF SECTION 7, TOWNSHIP 38 SOUTH, RANGE 40 EAST.
- B. THIS PLAT, AS RECORDED IN ITS ORIGINAL FORM IN THE PUBLIC RECORDS, IS THE OFFICIAL DEPICTION OF THE SUBDIVIDED LANDS DESCRIBED HEREON AND WILL IN NO CIRCUMSTANCES BE SUPPLANTED IN AUTHORITY BY ANY OTHER FORM OF THE PLAT, WHETHER GRAPHIC OR DIGITAL.
- C. NOTICE: THERE MAY BE ADDITIONAL RESTRICTIONS THAT ARE NOT RECORDED ON THIS PLAT THAT MAY BE FOUND IN THE RECORDS OF THIS COUNTY.
- D. IN THE EVENT THAT MARTIN COUNTY DISTURBS THE SURFACE OF A PRIVATE STREET DUE TO MAINTENANCE REPAIR OR REPLACEMENT OF A PUBLIC IMPROVEMENT LOCATED THEREIN, THEN THE COUNTY SHALL BE RESPONSIBLE FOR RESTORING THE STREET SURFACE TO THE EXTENT WHICH WOULD BE REQUIRED IF THE STREET WERE A PUBLIC STREET, IN ACCORDANCE WITH COUNTY SPECIFICATIONS.

**B** BETSY LINDSAY, INC.  
SURVEYING AND MAPPING  
208 NORTH U.S. HWY No. 2 - UNIT 8 - TEQUESTA, FLORIDA 33469  
(561)575-5275 (561)575-4324 FAX  
LICENSED BUSINESS NO. 6852  
**SEVEN J'S SUBDIVISION SHEET 4 OF 4**